



Horizontal WindWall® 6kW



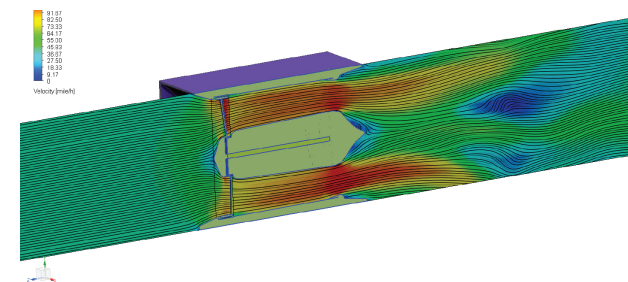
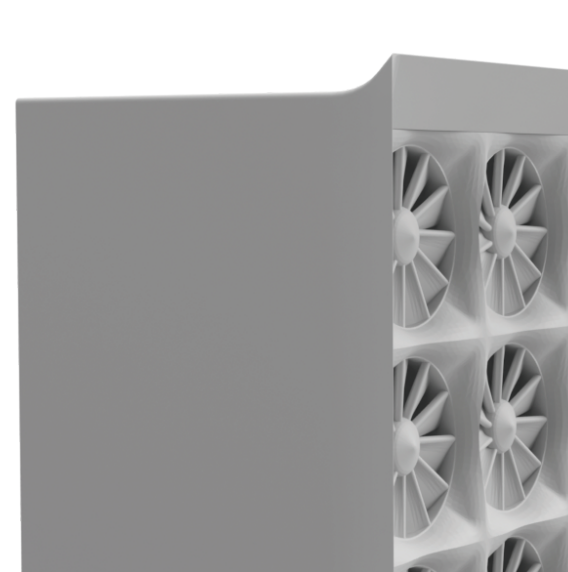
HORIZONTAL WINDWALL 6kW

The Horizontal WindWall® (HWW) is our most basic wind turbine system, and the HWW-6kW will produce 6 kW at max power. The HWW is a very versatile system that is a fixed base unit, which does not turn into the wind. It is best suited for areas with constant wind directions. Suggested applications: Incremental Power to support delicate grids.

Specifications

Max output	:	6kW
Max Voltage	:	Variable AC/DC ¹
Max Amperage	:	Variable AC/DC ¹
Size	:	21.5in x 45in x 18in
Weight	:	150lbs ²
Cut in speed	:	1.5mph
Max wind speed	:	100mph
Temperature	:	375° F to -14° F
Material make up	:	GF Plastic / CFR Polymer / Ultem / Stainless steel / Copper / Ceramic / Neodymium / AT ² LAS™

**Note: (1) Voltage and amperage is variable with set up of control boxes. Due to the nature of the windwall technology we can link the wind turbines together parallel or serial to increase voltage or amperage. (2) Estimated Weight*



Space age composite Construction

Key components of the HWW are made out of a space age composite called AT²LAS. By using this material we are able to increase the durability of our products without increasing the weight. AT²LAS is 40% lighter than aluminum with equal tensile strength to steel, all while being non-conductive and non-corrosive.

Advanced Ducting

Because each MicroCube® ducts the wind and controls the wind speed, we are able to achieve a much higher output at lower speeds than any of our competitors. This unique ability, resulting from the combination of our state-of-the-art blade system and generator that use both the wind speed and pressure of the air, creates a near vacuum effect...which is vastly different from the traditional back pressure found in older systems. Our ducting increases ambient wind speed by a factor of 1.92X as proven by the CFD analysis to the left.

Contact Info

Email: sales@sujeninternational.com

Phone: +1 (800) 536-1288

Horizontal WindWall® 6kW (HWW)

Patent # 9,062,654 B2

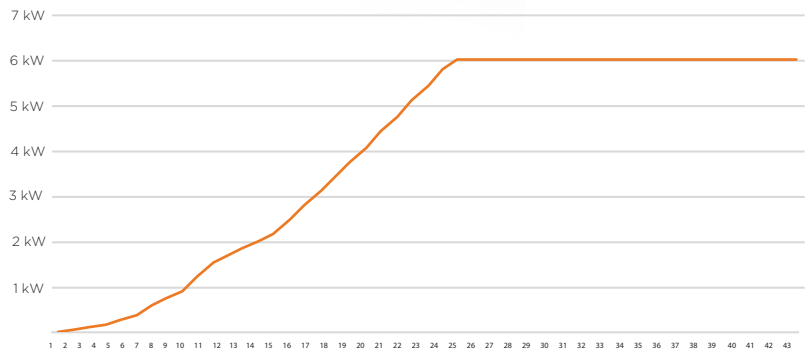
Max Output:

6kW @ 26mph

Performance:	Maximum Current	12A
	AC Voltage	740V
Physical:	Length x Width x Height (Measurements are in inches)	
	HWW	21.5x45x18
	Weight	150lbs 68kg
Operating Conditions:	Cut in Speed:	1.5mph / 0.67 m/s
	Max Speed:	140mph+ / 44.7 m/s
	Temperature:	375°F to -15°F 190°C to -25°C

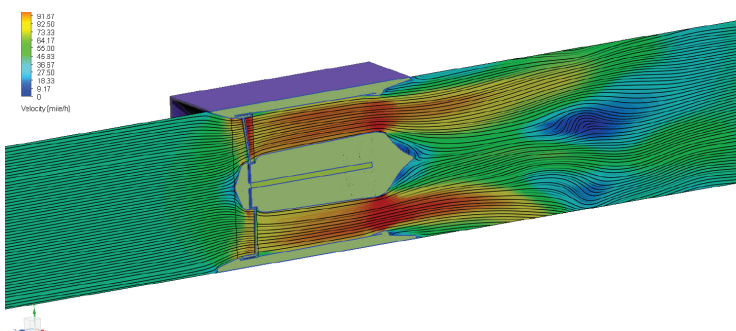


Power Curve



Horizontal WindWall® - 6kW Power Curve

**NOTE: Due to the advanced ducting of the HWW, windspeed at blade surface is up to 3X that of the ambient windspeed. This means at 15 mph ambient wind speeds, each blade of the HWW is experiencing 45 mph windspeeds.*



The Ducted Wind Turbine Difference

Because each MicroCube® ducts the wind and controls the windspeed, we are able to achieve much higher output at lower speeds than any of our competitors. The combination of our state-of-the-art blade system and unique generator, both of which use the windspeed and pressure of the air, create a near vacuum effect. This effect is vastly different from the traditional back pressure found in older systems. Our ducting increases ambient windspeed by a factor of 1.92X, as proven by the CFD analysis to the left.