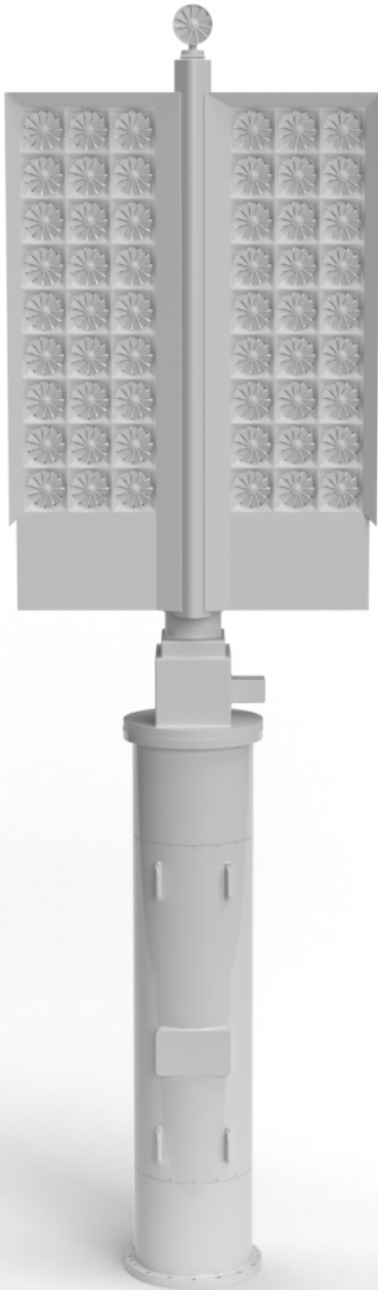




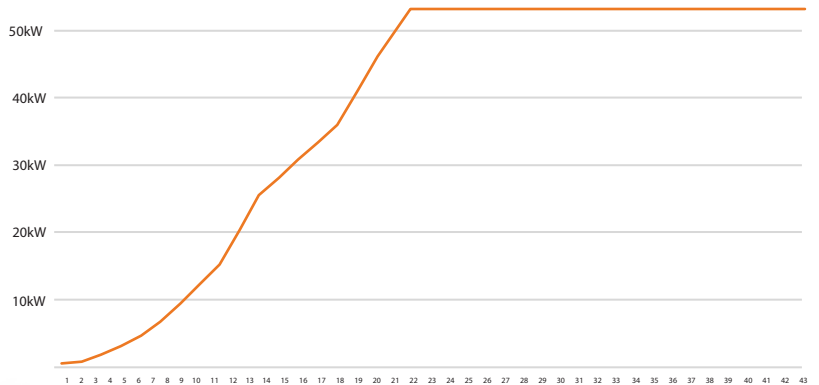
ⓘ 470 Blake Bottom Rd NW, Huntsville, AL 35806  
 ☎ +1 (256) 217-5892  
 🌐 www.americanwindinc.com



Advanced WindWall® - 54kW (AWW) Patent # 9,062,654 B2

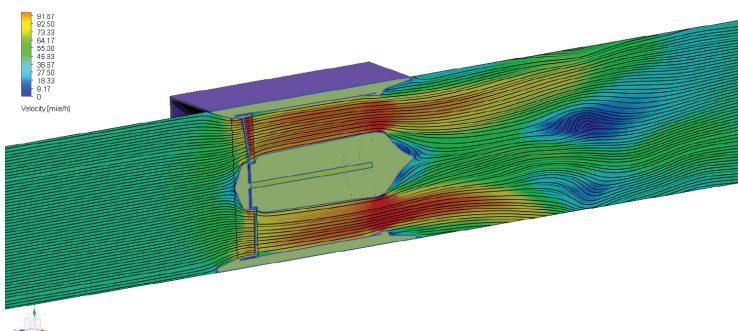
Max Output:		54KW @ 22mph
Performance:	Maximum Current	300A   30A   6A
	AC Voltage	180V   1,800V   9,000V
Physical:	Length x Width x Height (Measurements are in inches)	
	AWW	78x144x24
	Pole Segments	120x30
	Weight	2000lbs 907kg
Operating Conditions:	Cut in Speed:	1.5mph / 0.67 m/s
	Max Speed:	140mph+ / 44.7 m/s
	Temperature:	375°F to -15°F 190°C to -25°C

## Power Curve



■ Advanced WindWall® - 54kW Power Curve

*\*NOTE: Due to the advanced ducting of the AWW, wind speed at the blade surface is up to 3X that of ambient wind speed. For example, this means at 10mph ambient wind speed, each blade of the AWW is experiencing 30mph+ wind speeds.*



## The Ducted Wind Turbine Difference

Because each MicroCube® ducts the wind and controls the windspeed, we are able to achieve much higher output at lower speeds than any of our competitors. The combination of our state-of-the-art blade system and unique generator, both of which use the windspeed and pressure of the air, create a near vacuum effect. This effect is vastly different from the traditional back pressure found in older systems. Our ducting increases ambient windspeed by a factor of 1.92X, as proven by the CFD analysis to the left.